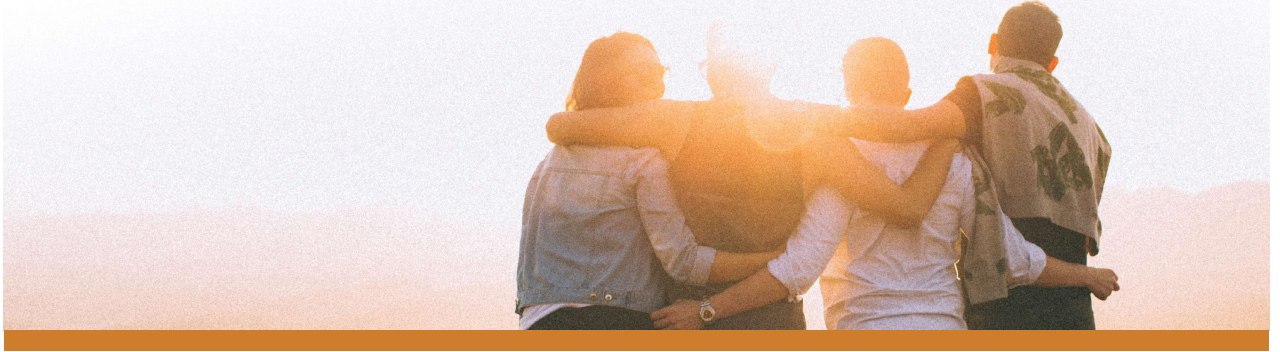


! D E L V O V N Z I E E G

## THE COMMUNITY PLANNING AND ACTION GROUP

is seeking to grow its membership to ensure that the voices and expertise of the diverse community impacted by HIV are included in the planning of New Mexico's statewide Integrated Plan for HIV Prevention and Care. Anyone with an interest in the future direction of HIV services in New Mexico should consider being a member.



## WHAT DOES IT MEAN TO BE A MEMBER OF THE GROUP?

As a member of the group, you will have the opportunity to share your **insights about what is happening in your local community regarding HIV medical treatment, support services and prevention services**. The CPAG meets monthly and there is significant information shared about statewide planning efforts and presentations that highlight new innovations in HIV treatment and prevention strategies.

CPAG is made up of 30 decision-making members. This membership is intended to **reflect the demographics of New Mexico's current population who are living with HIV**. However, it is not necessary to become a decision-making member in order to participate. In fact, the majority of monthly meeting attendees are not decision-making members and their participation and contributions are always welcome.

Monthly CPAG statewide meetings are moving to a hybrid format. That means that anyone can choose to attend in person in Albuquerque at the Alamosa Community Center - or virtually via the WebEx system (similar to ZOOM). Both decision-making members and community participants can receive support for attendance in person. That includes joining the group for lunch. Mileage reimbursement is also available for advocates, people living with HIV, and other persons who do not work in the field of HIV prevention or care. There are also local meetings of Regional Advisory Groups (RAG) which aim to get greater participation and input from all parts of the state.



To learn more about CPAG membership and participation, visit **NMCPAG.ORG** or email us at **andrew.gans@state.nm.us**.